



ARMSCOR

ARMSCOR Cal.38Spl. Revolvers

For Models 200, 202, 206 and 210

USER'S MANUAL

WARNING: READ THE INSTRUCTIONS and SAFETY RECAUTIONS IN THIS MANUAL CAREFULLY BEFORE USING THIS FIREARM

STATEMENT OF LIABILITY

This revolver is classified as a firearm or dangerous weapon. It is expressly understood that we assume no liability for its resale or unsafe handling under local laws and regulations. Arms Corporation of the Philippines assumes no responsibility for physical injury or property damage resulting from either intentional or accidental discharge, or for the function of the gun subjected to influence beyond their control. Arms Corporation of the Philippines will honor no claims which may result from careless handling, unauthorized adjustments, defective or improper ammunition, corrosion or neglect.

Examine your gun carefully at the time of purchase. It should be forwarded immediately to the factory or its sales agent if any adjustment of any kind is required.

WARRANTY

Arms Corporation of the Philippines will adjust or repair, to its commercial standard, the gun or any part thereof found by us to be defective in material or workmanship. Such services shall be made free of charge within one (1) year from date of registered purchase.

GENERAL INFORMATION and MECHANICAL CHARACTERISTICS

The **M-200 REVOLVER** is ARMSCOR'S latest all-new version of a six-shot, swing-out cylinder handgun specifically designed for Police and Military use. It comes as a result of an intensive design and product development which took a lot of research and in-depth design analysis for mechanical features, material and modern manufacturing processes.

The gun features a simple but modern and reliable mechanical mechanism of high quality standards. It utilizes a spring loaded, floating firing pin coupled with a transfer bar mounted on and controlled by the trigger. Only when the trigger is fully pulled does the transfer bar interpose itself between the firing pin and falling hammer, which allows the firing pin to contact the primer, thus igniting the cartridge.

This type of system ensures greater safety and dependability, and makes it virtually impossible for any accidental discharge to occur even under abnormal circumstances or rough handling. The only time the gun will fire is when the trigger is fully pulled to the rear.

The hammer has a wide spur serrated thumb piece for fast, positive non-slip cocking, and is activated by a coil spring which provides the needed energy for positive firing.

The **M-200 REVOLVER** is made of hi-grade chrome moly steel on all action parts which are heat-treated for strength, durability and consistency over prolonged usage and repeated firing. These component parts are made utilizing the latest technology in precision investment casting, making many of the parts standard and interchangeable.

Other notable features of the gun are: well-polished metal, deep blue finish; hand checkered hardwood or combat type rubber grip; precision drilled, reamed and button-rifled barrel; carefully machined cylinder made from aircraft high quality steel; crisp single shot action and smooth double action; quick and natural pointing ability that can be relied upon in any combat situation.

SAFETY PRECAUTION

Safety must be the first and constant consideration of every person who handles firearms and ammunition. The person with a gun in his possession has an important responsibility. He must know how to use his firearm safely. **DO NOT ATTEMPT TO USE ANY FIREARM WITHOUT HAVING A COMPLETE UNDERSTANDING OF ITS PARTICULAR CHARACTERISTICS AND SAFE USE.**

The M-200 REVOLVER is one of the safest type handguns, as long as it is used correctly by a competent person. Following are basic safety precautions which the user must be thoroughly familiar with when handling the revolver:

1. Always keep the gun holstered except when drawn for a definite purpose.
2. Always check the gun for live ammunition when picked-up, drawn from the holster, handed to or received from another person.
3. Never point the revolver at anything you do not intend to shoot.
4. Never cock the gun unless you are ready to shoot. Do not even insert your finger in the trigger guard until you are ready to shoot.
5. Avoid dry-firing even with dummy cartridges, unless same is performed on a regular target range or at known inanimate target.
6. When holding the gun that is ready to fire, be absolutely certain that it is not pointed at any part of your body or at any person within your immediate vicinity.
7. Beware of obstructions in the barrel. If, when firing, a weak or peculiar report is heard, cease firing, swing open the cylinder at once and inspect the barrel for an obstruction. A stuck bullet or any other object in the barrel should be removed immediately. Not doing so may result in a bulged or burst barrel.
8. When a misfire or a "DUD" is experienced, keep the revolver pointed at the target for at least ten seconds before inspecting the gun; a delayed firing may occur.
9. Always swing-out the cylinder from the gun frame every time an inspection is made.
10. As much as possible, wear shooting glasses and hearing protectors when firing.
11. Do not shoot at a hard surface, or water for the bullet can glance off and travel in unpredictable directions with considerable velocity.
12. Avoid drinking alcoholic beverages when handling the firearm.

SPECIFICATIONS

Caliber.....	.38 Special
Capacity.....	6 Shots
Action.....	Single and Double
Barrel.....	Half Shroud (M200) Full Shroud (M206/M210) Bull Barrel (M202)
Hammer.....	Wide Serrated Thumbpiece
Trigger.....	Wide Finger Radius; Polished Sides
Sights, Front.....	Fixed Ramp
Rear.....	Fixed Wide Square Notch Adjustable For Windage/Elevation (M210)
Safety.....	Transfer Bar System
Firing Pin.....	Floating
Barrel Length.....	102 mm. 70 mm. (M206)
Overall Length.....	222mm. 197mm. (M206)
Overall Height.....	143mm. 146mm. (M210)
Weight, Empty.....	0.930 Kg. 0.865 Kg. (M206)
Trigger Pull, Single Action.....	1.81 – 2.95 Kg.
Double Action.....	5.25 – 5.90 Kg
Rifling, Twist.....	Right Hand, One Turn/455mm.
# of Grooves.....	6
Finish.....	Blued
Stocks.....	Combat Type Plastic Grip

NOTE: Specifications subject to change without prior notice.

AMMUNITION

The M-200 REVOLVER is chambered for Cal. .38 Special cartridges manufactured in accordance with standard industry practice.

CAUTION: NEVER USE CARTRIDGES OF UNKNOWN CALIBER AND LOADS. IT IS EXTREMELY DANGEROUS TO USE A CARTRIDGE WHOSE PRESSURE IS GREATER THAN THAT DEVELOPED BY CARTRIDGES LOADED TO INDUSTRY STANDARDS, AS THE FIREARMS MAY BE DAMAGED, AND DEATH OR SERIOUS INJURY TO THE SHOOTER OR OTHER PERSONS MAY RESULT.

OPERATING INSTRUCTIONS

CAUTION: THE M-200 REVOLVER IS PACKED WITH LUBRICANT, IT IS A MUST TO FIRST REMOVE EXCESS OIL AND INSPECT THE GUN BEFORE USAGE. FIRING THE GUN WITH EXCESSIVE OIL, GREASE OR ANY OTHER

LUBRICANT MAY RESULT TO SEVERE DAMAGE TO THE FIREARM AND INJURY TO THE SHOOTER AND THOSE NEARBY.

LOADING

Loading is done by moving the latch rearward with the right thumb. This will release the cylinder so that it can be swung out to the left side for loading. With the muzzle pointing downwards, insert the cartridges into the cylinder chambers making certain the cartridges are firmly seated. Return the cylinder to its original position **by retracting the latch again and swinging it back to the cylinder**. Make sure that the latch returns, and the cylinder locks in alignment with the barrel bore. The revolver is now ready to fire.

CAUTION: THE CYLINDER SHOULD NOT BE SWUNG IN AND OUT OF THE FRAME WITH EXCESSIVE FORCE, AND NEVER BY WRIST ACTION.

FIRING

Single-Action Firing is commonly used for deliberate firing when there is enough time to sight the gun carefully and squeeze the trigger in an unhurried manner. It is accomplished by pulling the hammer to its extreme rearward position; the trigger will hold the hammer in place. The gun may then be fired by merely squeezing the trigger. Single shooting may also be employed in rapid firing, depending on the ability of the shooter to quickly pull the hammer, aim the gun and squeeze the trigger.

Double-Action Firing is used where the time or any other circumstance does not allow the shooter to fire in single action fashion. Shooting double-action is done by merely pointing the gun at the target and pulling the trigger rearward to its fullest extent. Released trigger to its forward most position to repeat process of double action firing.

UNLOADING

To extract the fired or unfired cartridges, move the latch rearward and swing out the cylinder to its extreme outward position, point the gun upwards and press down the ejector rod head. This will eject the cartridges of fired shells from the cylinder chambers. The gun is now ready for reloading.

CARE and CLEANING

For the revolver to function safely and reliably, it is essential to keep it always in good condition by making it free of rust, dirt, grease and firing residues. It is important to clean and lubricate the gun to avoid rusting of metal parts after firing and before storing. Doing the job requires no disassembly of mechanism parts. Under normal cleaning purposes, removal of the cylinder-crane link assembly is sufficient.

To clean the revolver when not fired or after prolonged storage, rub the external parts with a slightly oiled rug and then **swab** out the bore and cylinder chambers with a flannel patch. Remove excess oil but leave a slight film to protect the metal from rusting. Clean all crevices with a nylon or brass brush. **DO NOT OVER LUBRICATE.**

To clean the revolver after firing, scrub the bore and the cylinder with a gun cleaning solvent (preferably nitro solvent), and then use a brush dipped in solvent, to remove powder and primer residues. Areas to be cleaned are from around the breech of the cylinder, ejector, barrel bore and other adjacent areas which have been subjected to the residue. If there are lead residues or foreign matters left inside the barrel or chambers,

scrub these parts further with brass brush dipped in powder solvent. After cleaning the gun with solvent, remove all traces of the solvent and apply a light film of oil immediately thereafter. It is normal to find residues in the barrel and cylinder within 24 hours to 48 hours after initial cleaning. These can be removed with bristle brush and a slight re-application of solvent, after which light oil should be re-applied on all surface.

CAUTION: NEVER STORE THE REVOLVER WITH A PLUG IN THE BARREL. THIS WILL CONTRIBUTE TO THE ACCUMULATION OF MOISTURE. THE GUN SHOULD BE RE-STORED IN ROOMS WITH DRY ATMOSPHERE AND WITH THE LEAST HUMIDITY; IT SHOULD NOT BE STORED ENCASED IN LEATHER OR ANYTHING THAT WILL ATTRACT AND HOLD MOISTURE, CAUSING IT TO RUST.

When storing the gun for a prolonged period of time, the gun's locking mechanism should be oiled heavily with an acid-free lubricant. The external parts must be heavily coated with an anti-rust oil or grease to prevent moisture from sipping into the internal mechanism and settling on the external surface. Linseed oil should be applied to wooden grips to prevent cracking. CAUTION should be exercised in doing this so as not to affect the moving mechanisms, linseed oil becomes sticky when dry. Before using a revolver that has been stored for a prolonged period of time, the revolver must always be cleaned first as discussed above.

BASIC DISASSEMBLY and REASSEMBLY

CAUTION: BEFORE STARTING DISASSEMBLY, CHECK TO ENSURE THE CYLINDER CHAMBERS ARE FREE OF AMMUNITION.

DISASSEMBLY

The cylinder-crane link assembly is removed by unscrewing the crane lock screw. Swing out the cylinder and draw forward out of the frame. With leather-padded pliers, unscrew the ejector rod head and remove the crane link out of cylinder. Further stripping of cylinder-ejector assembly is not recommended.

To disassemble the mechanism parts, remove grips and side plate screws and pry up the side plate gently and evenly, tapping the frame lightly to loosen it. Remove the transfer bar and hand from their pivot pins on the trigger. Cock the hammer and insert an opened paper clip through the cross hole of the hammer spring guide to trap the hammer spring. By releasing the hammer, the spring assembly is removed out of frame. Pull the trigger to the rear and remove the hammer and trigger successively out of the frame cavity. Remove the cylinder lock out of its hole in the frame. To remove the cylinder stop, pivot it downward out of its slot in the frame and then lift it from its pivot pin. Further disassembly of the remaining parts (e.g. the firing and hammer-plunger assemblies, barrel and pivot pins as attached to frame) is not recommended. This should only be performed at the factory or by a qualified gunsmith.

REASSEMBLY

Reassembly is done in the reverse order of disassembly. In attaching the side plate, push the cylinder lock fitted to frame all the way forward. Hold the side plate while depressing the latch until it is even with the edge of the frame. Then, engage its lock lid to its slot in the frame and push the side plate gently inward to its final position. In doing

this, make sure that the cylinder lock pin enter its clearance slot on the latch and the transfer bar and hand do not come off free of their pivot pins on the trigger. RE-CHECK THE GUN FOR PROPER FUNCTIONING BEFORE LOADING LIVE AMMUNITION.

PARTS LIST

Part No.	Part Name
20001	Barrel *
20001A	Barrel Pin
21002	Barrel Housing *
21003	Frame *
20004	Cylinder *
20005	Cylinder Lock
20006	Cylinder Lock Pin
20007	Cylinder Stop **
20008	Cylinder Stop Pin
20009	Cylinder Stop Spring
20010	Crane Link *
20011	Crane Link Pivot *
20011A	Crane Link Pivot Stud Cross Pin
20012	Crane Lock Screw
20013	Crane Lock Detent
20014	Crane Lock Spring
20015	Ejector *
20016	Ejector Rod
20017	Ejector Rod Spring
20018	Ejector Rod Head
20019	Ejector Rod Guide *
20020	Ejector Alignment Pin
20021	Firing Pin *
20022	Firing Pin Bushing *
20023	Firing Pin Bushing Retainer Pin
20024	Firing Pin Spring *
20025	Side Plate *
20026	Side Plate Screw
20027	Hammer **
20028	Hammer Pivot Pin
20029	Hammer Spring
20030	Hammer Spring Guide
20031	Compression Plate
20032	Hammer Pawl **
20033	Hammer Pawl Pin
20034	Hammer Pawl Spring
20035	Hammer Pawl Plunger
20036	Trigger **
20037	Trigger Pivot Pin
20038	Trigger Spring
20039	Trigger Spring Rod
20040	Trigger Spring Spacer Spring
20041	Hand **

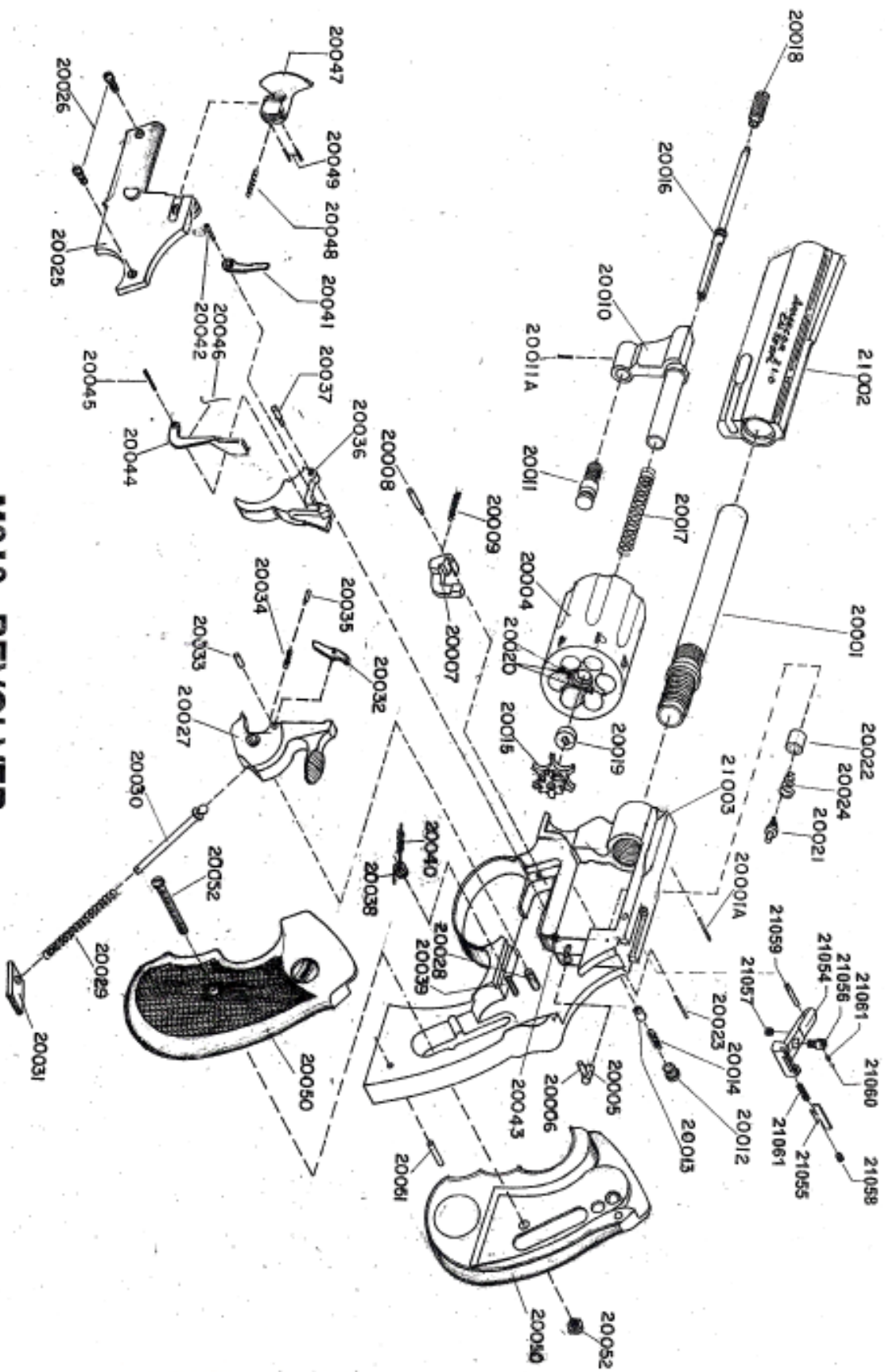
20042	Hand Pin
20043	Hand Rest Pin
20044	Transfer Bar **
20045	Transfer Bar Pin
20046	Transfer Bar Spring *
20047	Latch **
20048	Latch Spring
20049	Latch Bearing Pin
20050	Grip
20051	Grip Pin
20052	Grip Screw and Nut
20053	Grip Logo
21054	Rear Sight Block (M210)
21055	Rear Sight Blade (M210)
21056	Rear Sight Block Screw (M210)
21057	Rear Sight Block Elevating Spring (M210)
21058	Rear Sight Blade Adj. Screw (M210)
21059	Rear Sight Block Pivot Pin (M210)
21060	Rear Sight Elevating Screw Lock Bearing (M210)
21061	Rear Sight Screw Lock Bearing Spring (M210)

* - Parts Not Sold – Repaired or fitted by factory only.

** - Parts that may be fitted by Police Armorers or competent gunsmith only.

WARNING

Discharging firearms in poorly ventilated areas, cleaning firearms or handling ammunitions may result in exposure to lead and other substances known to the State of California to cause birth defects, reproductive harm and other serious physical injury. Have adequate ventilation at all times. Wash hands thoroughly after exposure.



M210 REVOLVER